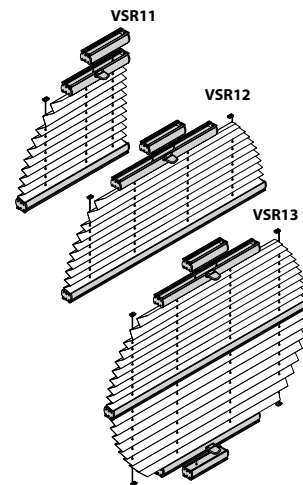


VSR11, VSR12, VSR13

Montage- und Bedienanleitung

Assembly and operating instructions
Notice de montage et mode d'emploi



10 / 2014

technische Änderungen bleiben
vorbehalten

subject to technical change
sous réserve de modifications techniques

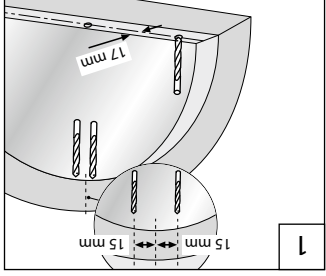
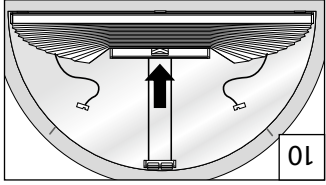
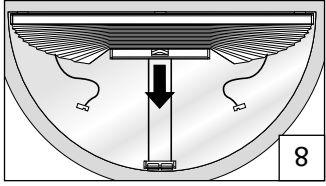
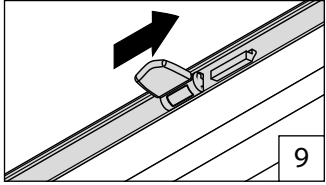
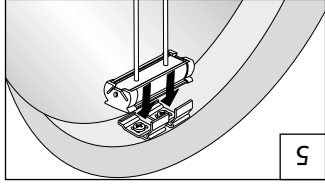
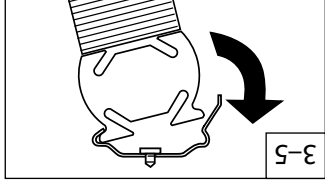
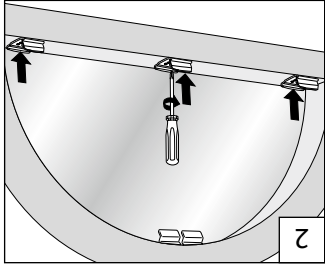
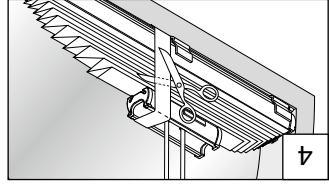
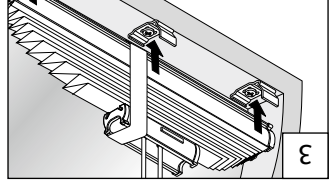
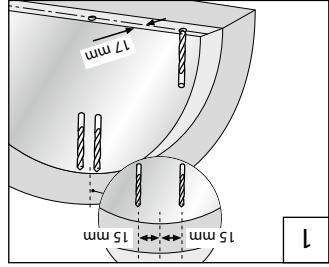
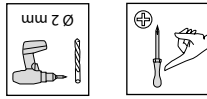


A Montage

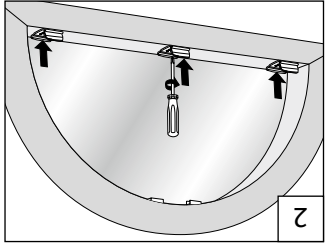
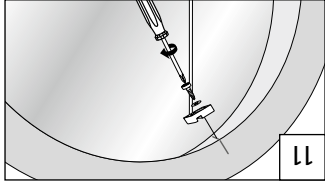
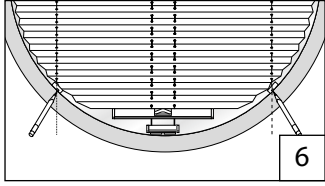
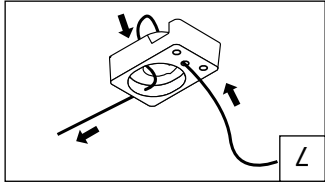
Fixation - Montage

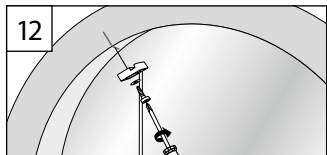
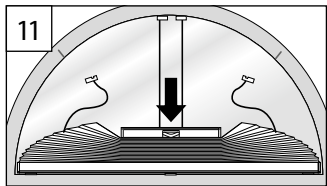
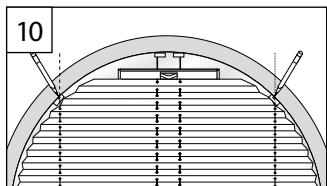
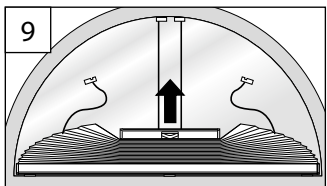
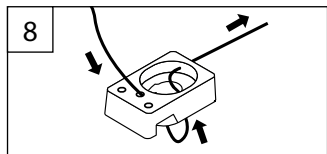
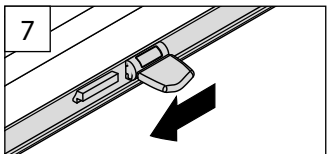
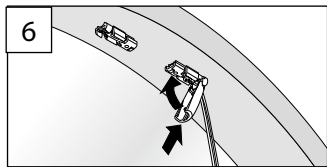
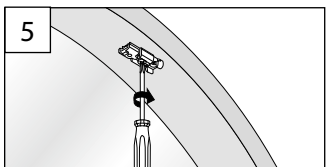
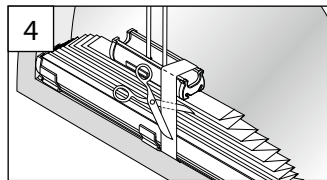
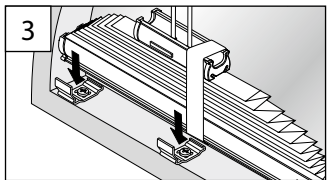
→ Bitte nur beiliegende Schrauben verwenden!

Please use only the enclosed screws! - Veuillez utiliser seulement les vis jointes!



SPANNSCHUH
TENSION CORD BRACKET - SSUPORT DE CABLES

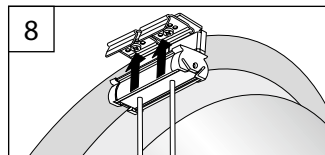
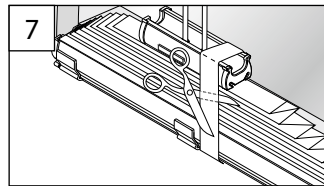
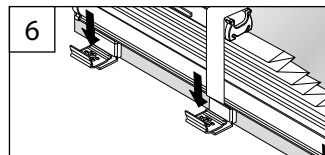
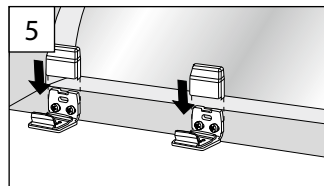
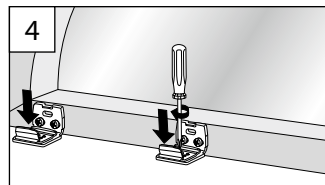
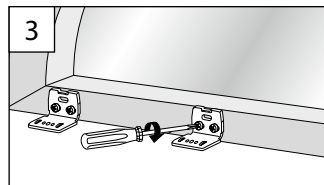
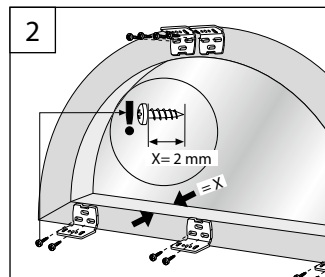
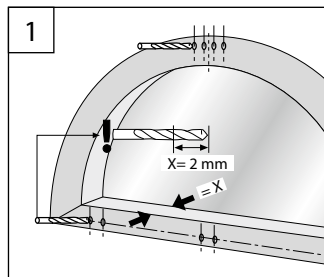




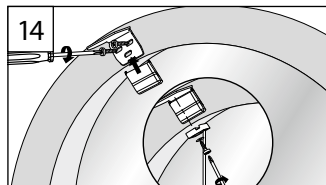
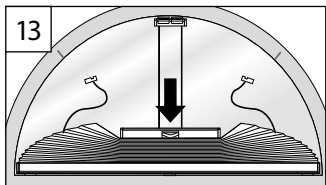
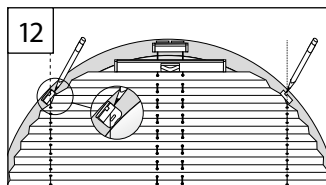
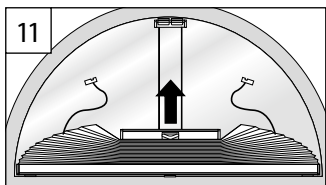
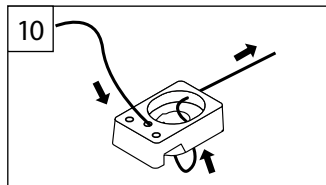
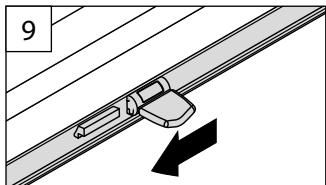
3

WANDWINKEL

WALL FIXING BRACKET – SUPPORT MURAL



4

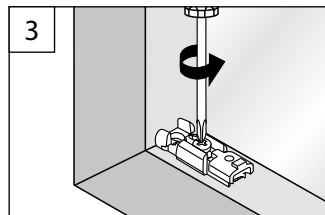
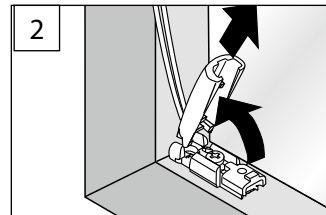
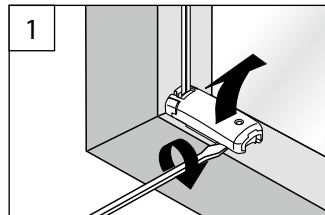


B Demontage

Dismantling – Démontage

SPANNSCHUH

TENSION CORD BRACKET – SUPPORT DE CÂBLES



DECKENCLIP

CEILING CLIP – CLIP PLAFOND

