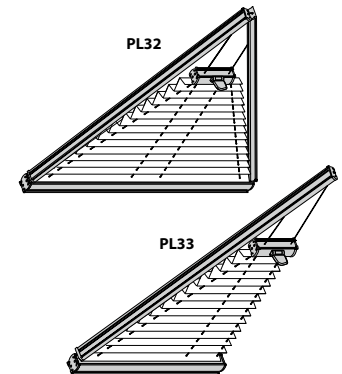


PL32, PL33

Montage- und Bedienanleitung

*Assembly and operating instructions
Notice de montage et mode d'emploi*



10 / 2014

technische Änderungen bleiben
vorbehalten

*subject to technical change
sous réserve de modifications techniques*



A Montage

Fixation – Montage

→ **Bitte nur beiliegende Schrauben verwenden!**

Please use only the enclosed screws! - Veuillez utiliser seulement les vis jointes!



Ø 2 mm



Standard

Standard
Standard

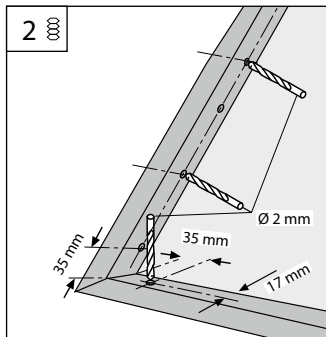
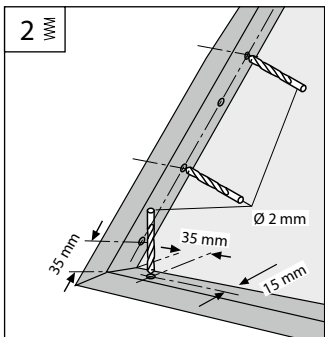
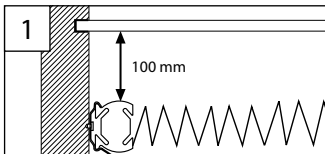


Wabe

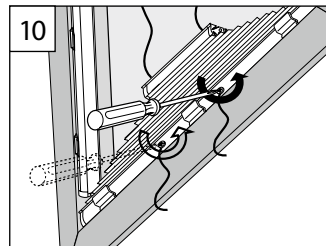
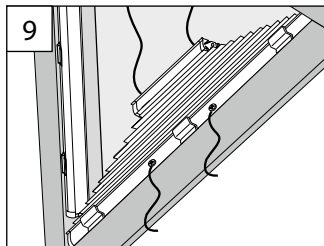
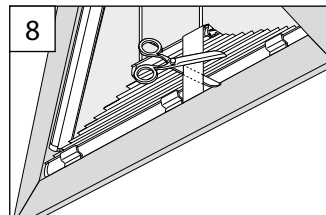
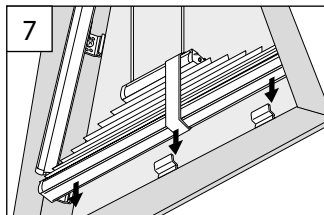
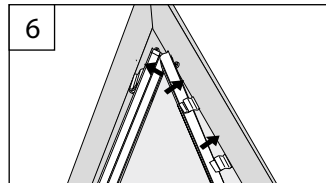
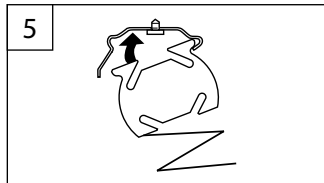
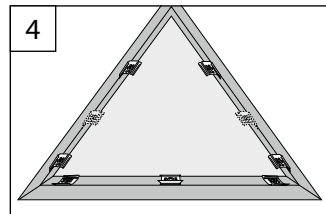
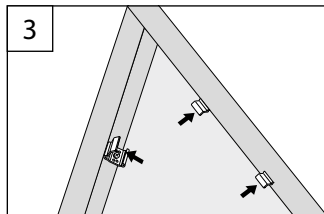
Honeycomb
Alvéole

DECKENCLIP

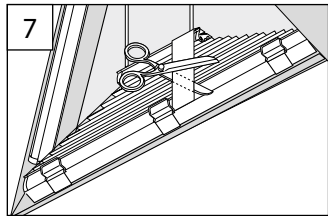
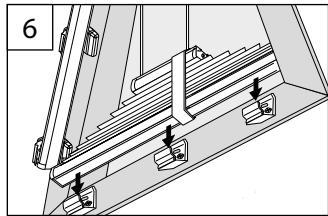
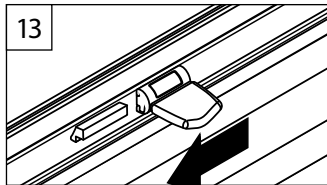
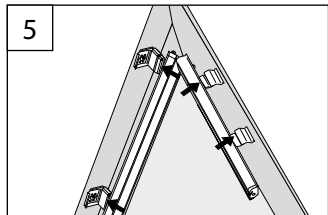
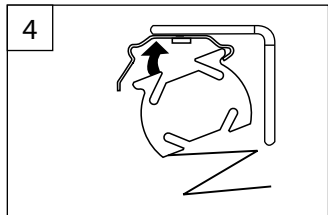
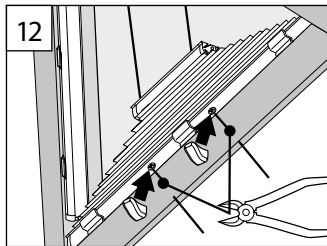
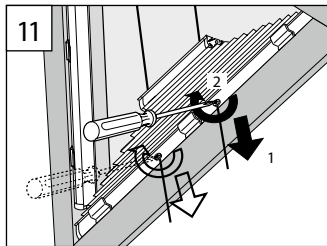
CEILING CLIP – CLIP PLAFOND



1

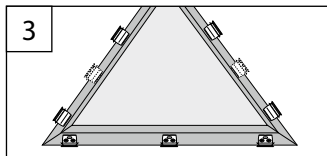
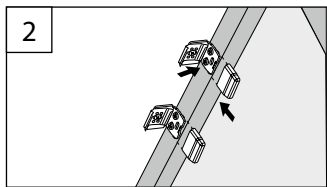
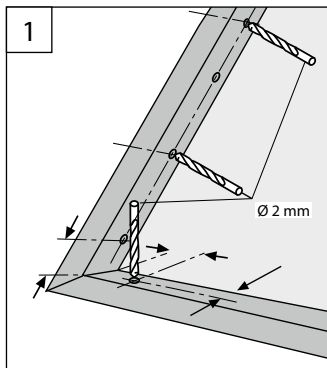


2

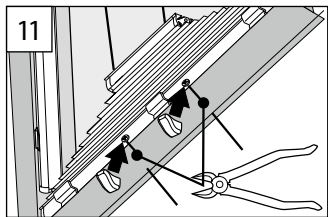
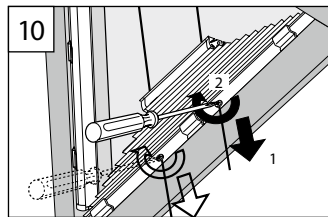
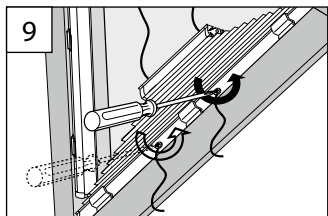
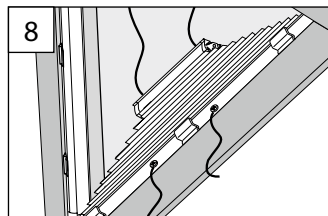


DECKENCLIP / WANDWINKEL

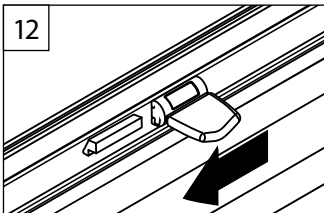
CEILING CLIP / WALL FIXING BRACKET - CLIP PLAFOND / SUPPORT MURAL



3



4

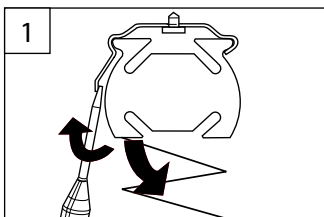


B Demontage

Dismantling – Démontage

DECKENCLIP

CEILING CLIP – CLIP PLAFOND



C Bedienung

Operation – Manipulation

