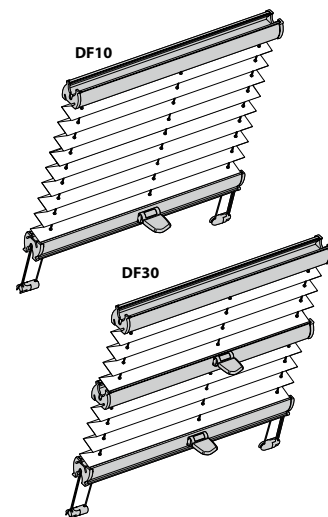


DF10, DF30

Montage- und Bedienanleitung

Assembly and operating instructions
Notice de montage et mode d'emploi



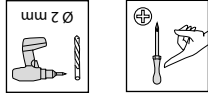
10 / 2014

technische Änderungen bleiben
vorbehalten

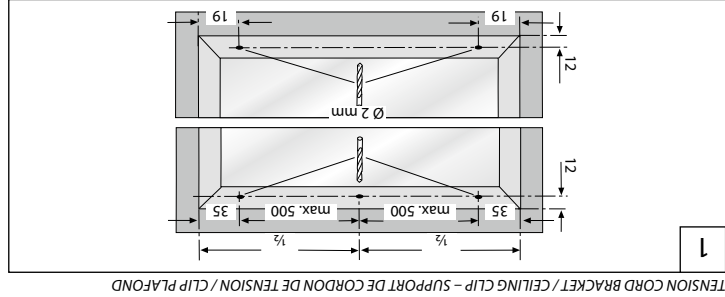
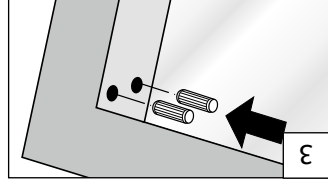
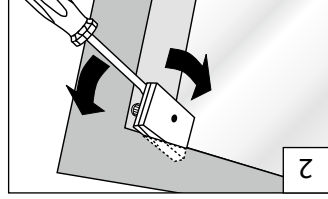
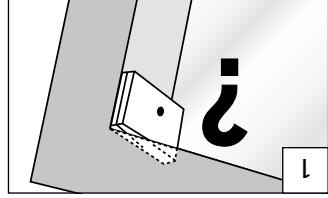
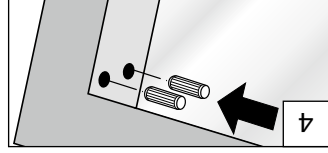
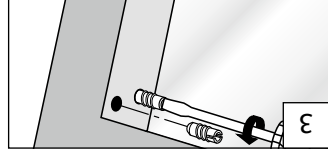
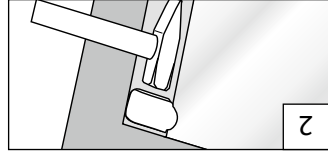
subject to technical change
sous réserve de modifications techniques



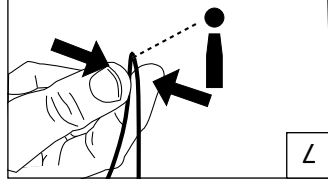
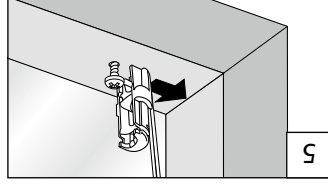
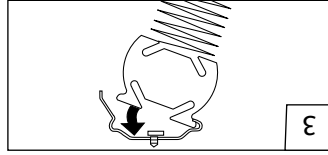
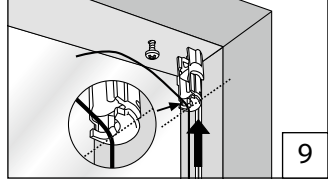
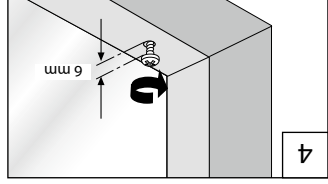
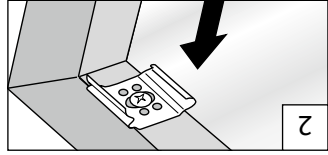
→ Bitte nur beliegende Schrauben verwenden!
Please use only the enclosed screws! - Veuillez utiliser seulement les vis jointes!

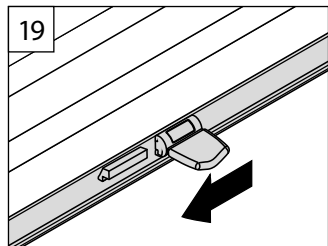
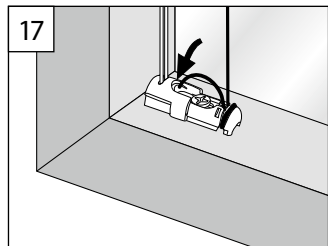
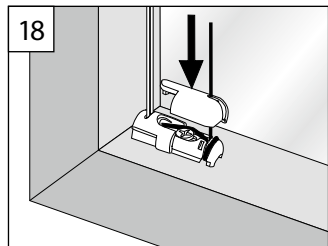
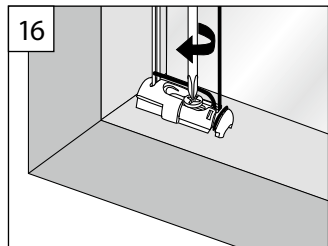
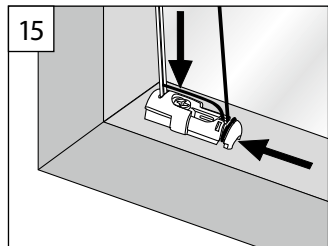
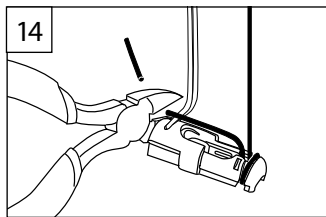
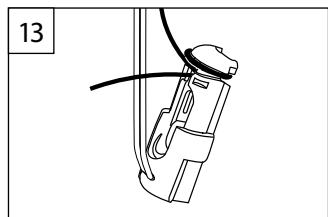
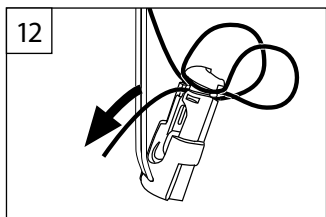
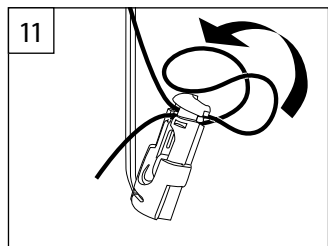
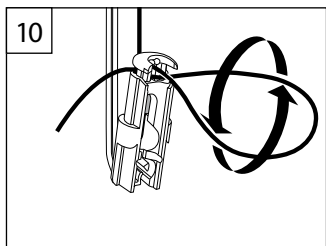
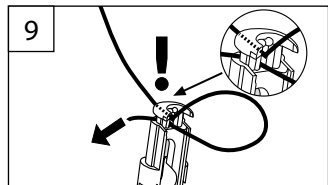
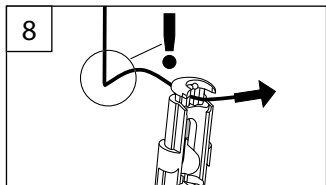


VORBEREITUNG
PRÉPARATION - PRÉPARATION



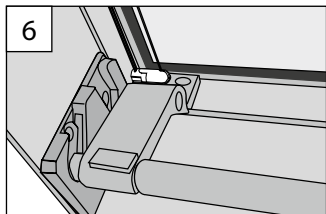
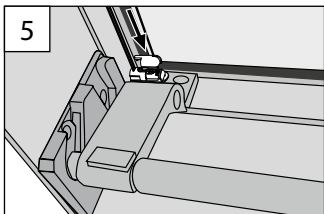
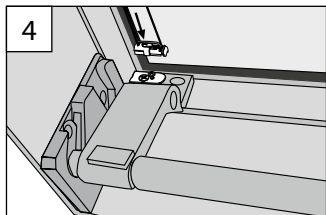
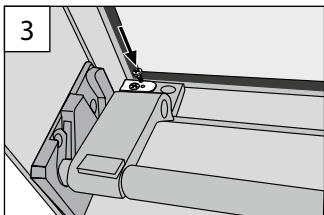
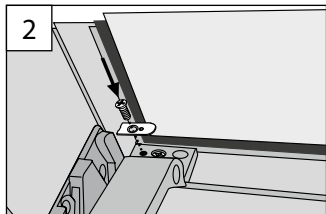
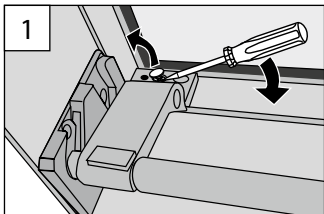
SPANNSCHUH / DECKENCLIP
TENSION CORD BRACKET / CEILING CLIP - SUPPORT DE CORDON DE TENSION / CLIP PLAFOND





BRAAS ERGÄNZUNG

BRAAS ENDORSEMENT – COMPLÉMENT BRAAS



B Demontage

Dismantling – Démontage

SPANNSCHUH

TENSION CORD BRACKET – SUPPORT DE CORDON DE TENSION

